

Shaping our South Island Allied Health workforce – The Calderdale Framework in Action



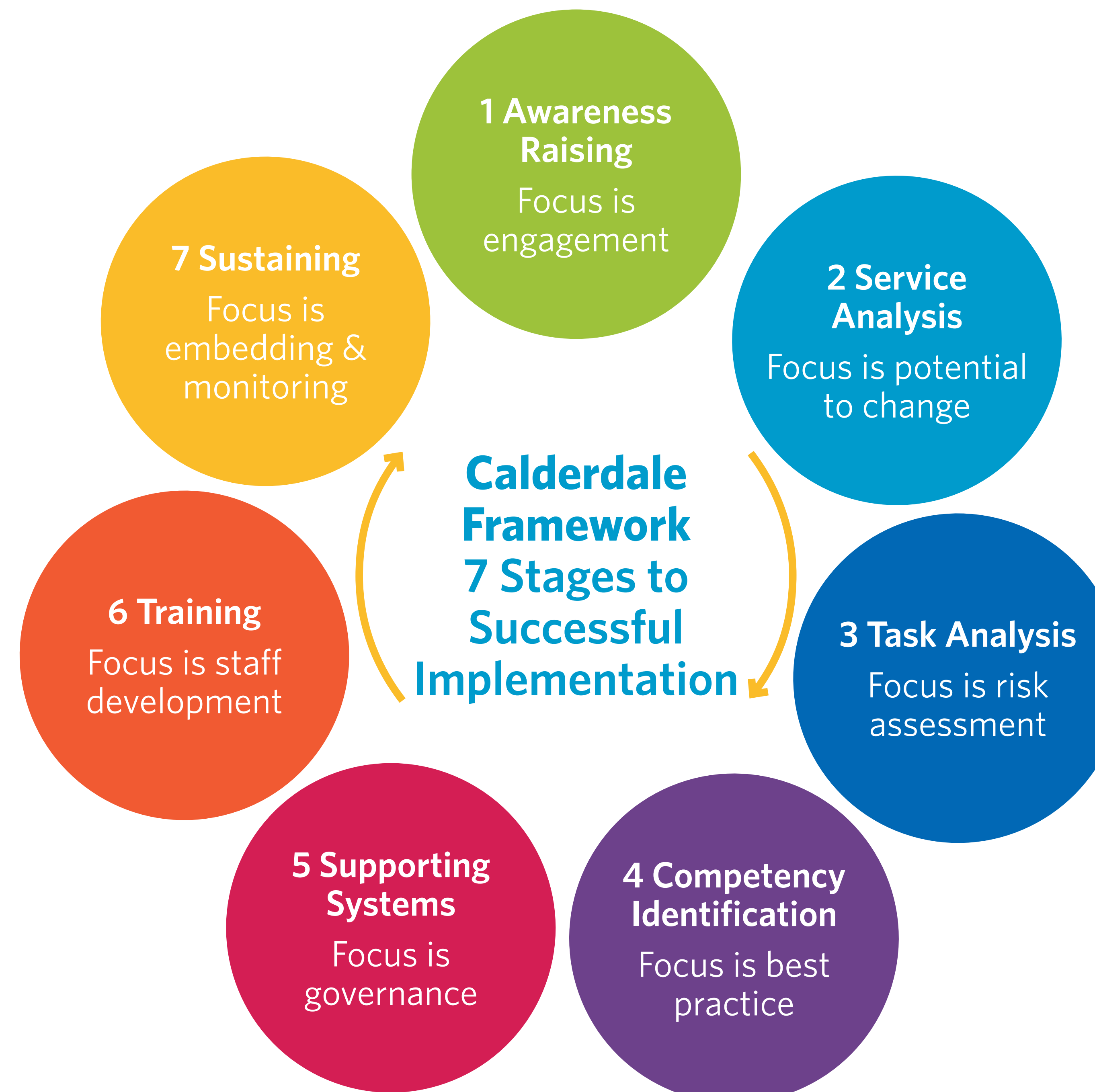
What has been achieved so far?

Sponsorship	Strategic direction from the South Island Directors of Allied Health
Kaiāwhina Workforce	Allied Health Assistant training (Careerforce NZQA Level 3) – 68 Allied Health Assistants regionally have completed training & 25 currently in training
Building capacity	Calderdale Framework Facilitators in South Island DHBs <ul style="list-style-type: none"> • 8 credentialed • 18 in training in 2017
Foundation Training	Calderdale Framework Foundation Day training provided across SI DHBs – 250 plus have attended Foundation Day training to date
Building resources/support	<ul style="list-style-type: none"> ✦ HealthLearn Forum for facilitators online platform - one 'go to' place for all CF resources ✦ Established a peer support network for facilitators across the SI DHBs
"First do no harm"	<ul style="list-style-type: none"> ✦ Allied Health Assistants training on When To Stop Clinical Task Instruction – provides 'ground rules' on when to go ahead/when to discontinue a treatment session ✦ Training being rolled out across SI DHBs
Workforce changes across SI	<ul style="list-style-type: none"> CF projects in all 5 SI DHBs <ul style="list-style-type: none"> • new/expansion of projects with 2nd cohort of facilitators • Examples <ul style="list-style-type: none"> ✦ Service accreditation for ENABLE equipment ✦ Implementing a work-based education programme for the Community Rehabilitation and Enablement Support Team (CREST) ✦ Falls programme for older adults ✦ 'Move more sit less' programme ✦ Community-based mobility rehab • 11 regional Clinical Task Instructions available for use in projects
CF Practitioners	<ul style="list-style-type: none"> • Allows South Island to be self-sufficient in training facilitators • 2 Practitioners being trained by CF Founders (EWS Ltd) • South Island supporting Central Region – training for 12 facilitators commenced 2017

Why use the Calderdale Framework?

The Calderdale Framework is a clinically-led workforce development tool to facilitate a 'best for people, best for system' approach.

- Consumer focused and clinician led
- Systematic method for reviewing skill mix & roles within services
- A framework for delegation & professional skill-sharing
- Ensures quality and safety for patients & reduces risk
- Transferable across health care settings
- Improves efficiency in the utilisation of roles
- Part of future proofing our workforce



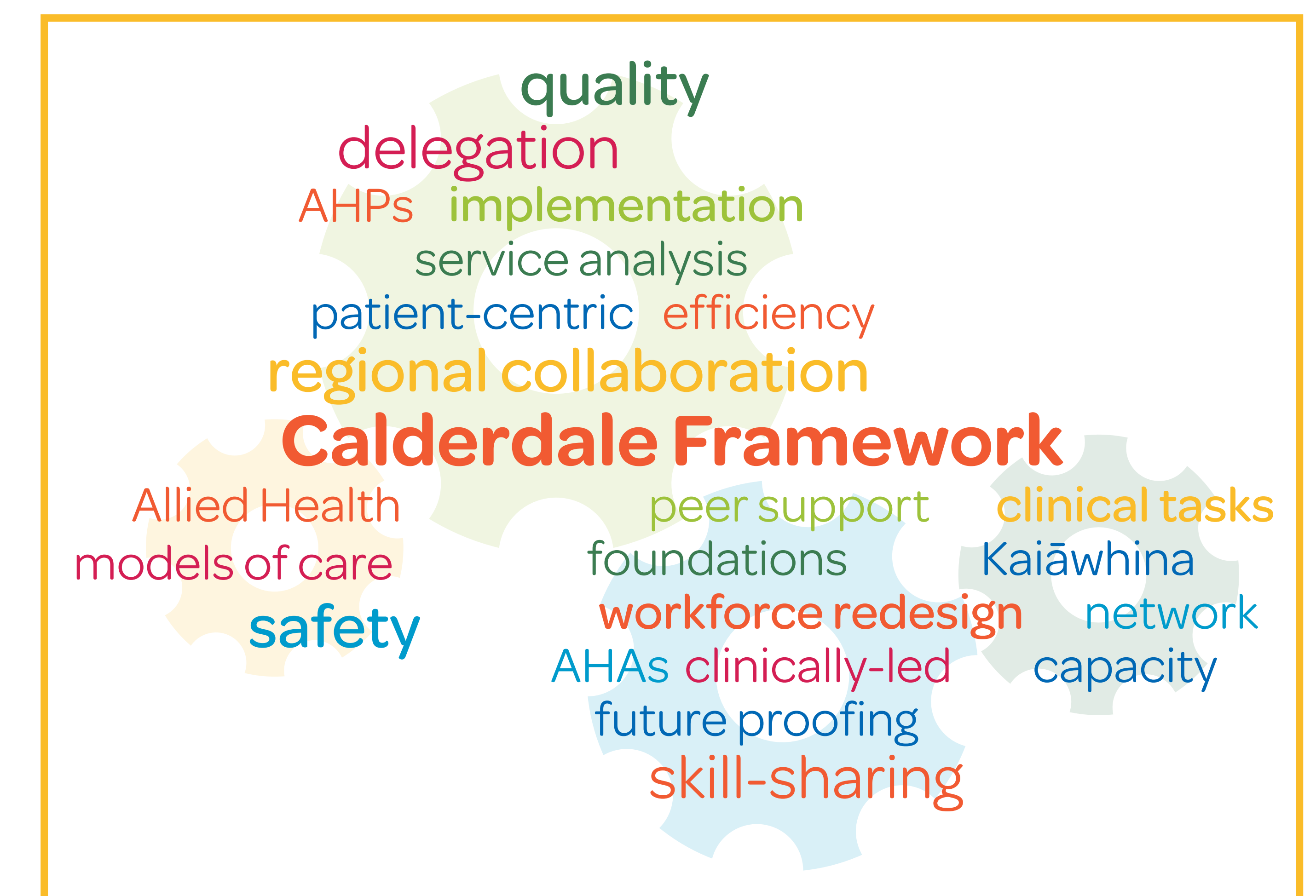
*The right person
doing the right thing,
at the right time,
RIGHT!*

Where to next?

Working towards sustaining and embedding CF within Allied Health across the South Island DHBs

Extending the reach and new ways of working across health settings
Destination: 'Business as usual'

- Training – for additional Facilitators, 'Champions' and others
- Development of projects in other services
- Expansion of existing projects to more AHA & AHP clinical tasks
- Expanding the library of Clinical Task Instructions and training materials for use in projects throughout the South Island
- Sharing of learning and resources between South Island & Central Region CF implementation



Further information on the Calderdale Framework:

www.calderdaleframework.com

South Island implementation:
www.sialliance.health.nz/calderdale

Contact: Anne Buckley, Allied Health Facilitator,
South Island Workforce Development Hub
Anne.Buckley@siapo.health.nz

